



Hi I'm  
Safety Sam

## INTRODUCING

# SCAFF HAT

Works with Cuplock, Pin Lock and Peri Up Scaffolding Systems

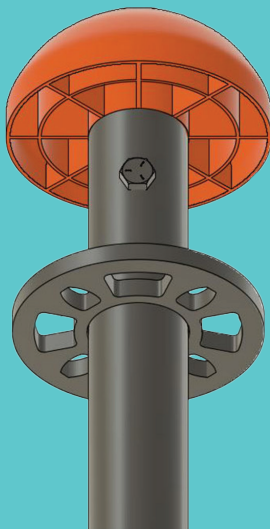
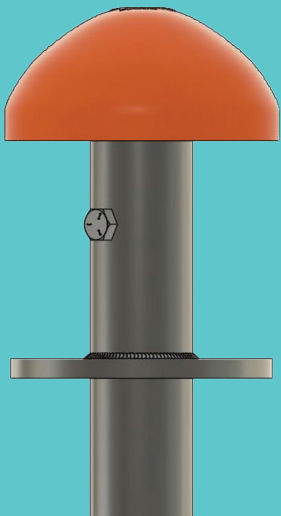
### Safety

- Softens sharp scaffold tube/pin edges
- Bright safety orange color stands out on perimeter fencing/scaffold leg ends
- Bright color works great around excavation as danger alert
- Recommended usage on areas where human contact can occur
  - ▶ Low scaffold height perimeter fencing
  - ▶ Areas where a person could fall on a scaffold leg

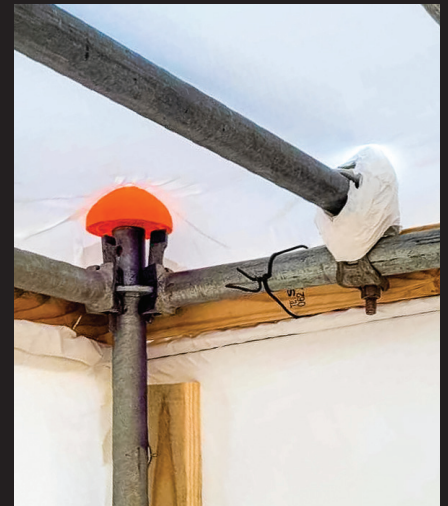
### Containments

- Prevents containment penetrations
- Stop taping/padding off scaffold leg ends
- Creates a nice smooth rounded surface to support all types of poly

Patent Pending



**STOP THIS FROM HAPPENING**



# SAFETY FIRST